

FROTHING JAR™



blendtec
COMMERCIAL



FROTHING JAR™



ROOM TO BREATHE

2 quarts of total volume provides a huge capacity for producing frothed liquids and foam. Instead of repeatedly creating single servings, you can now produce in batches and serve several customers at once.

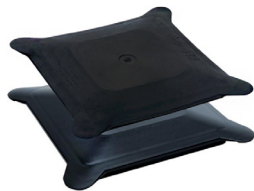
WAVE OF THE FUTURE

Our stainless steel blade features a “wave” blend which enhances the frothing capability - easily doubling the volume of many liquids. The blade works great for cold foam coffee, non-dairy milks, whipping cream, hot chocolate, syrup and more!



LATCHING LID

Preferred for non-sound enclosure models



FLAT (HARD & SOFT)

For sound enclosure models only



VIEW FROM THE TOP

Blendtec's innovative frothing blade



NSF APPROVED

USAGE

Quick and effective way to froth or aerate liquids

BLADE

2-7/8 diameter 300 series stainless steel blade with “wave” blend

VOLUME

Total Volume = 2 Quarts
Starting liquid volume = 32 ounces



*For international warranty and certification details please see your in-country distributor.

WWW.BLENDTEC.COM/COMMERCIAL | 1-800-BLENDTEC

SPS-064 A04, SPEC SHEET, FROTHING JAR, US ENG, OCTOBER 2020

40-541
blendtec
COMMERCIAL